

ACOUSTIC PENDANT LIGHT INSTALLATION GUIDE

- REESE

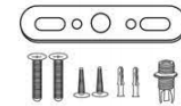
ACCESSORIES DETAIL



1. Fittings



Top cover + screw & nut



Bracket holder + screw & nut



Bulb holder

2. Optional for plastered ceiling; to use reinforcement on top of the ceiling



Spring toggle

or

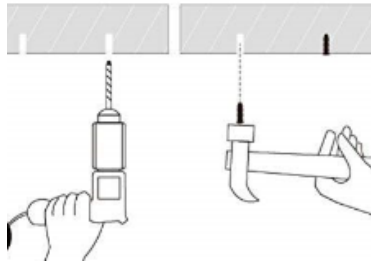


Plywood Strip (9 – 15mm thk)

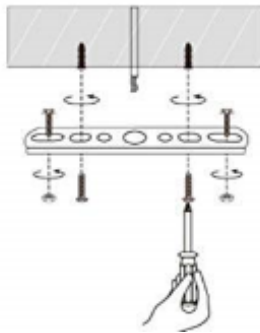


INSTALLATION METHOD

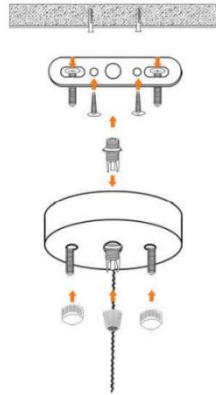
1. Drill two holes on the ceiling based on the desired position. Fasten two expansion screws to the ceiling.



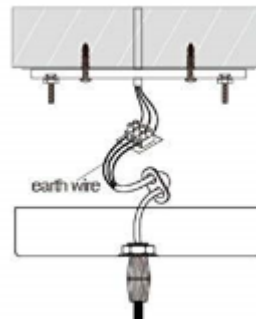
2. Attach two flat-head screw on the mounting bracket and fix the mounting bracket to surface using two tapping screw provided.



3. Screw the top cover with fittings provided.



4. Connect the earth wire and power cable using the terminal blocks.



5. Fix the ceiling base plate to hanging panel using two nuts provided.



6. Insert the lamp shade and tighten screw to hold the lamp. Insert the bulb and the installation is complete.



7. Tips ; standard height to hang the pendant light

